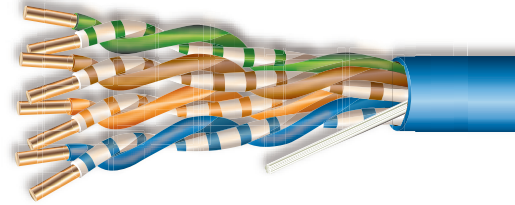


Cat-5e Riser 24 AWG 4 Pair Communications Cable



**24 AWG Solid
Bare Copper**

300 Volts

**Polyethylene
Insulate**

-10 °C to +75 °C

**2' Sequential
Footage Markers**

APPLICATIONS

Gigabit Ethernet (1000BaseT), High Speed Voice/Data Applications, 100 BaseT and 100 Base TX, Video to Desktop, ISDN and Multimedia, 55/155 Mbps ATM, 100Base VG ANYLAN.

CONDUCTORS

24 AWG solid bare copper.

ASSEMBLY

4 twisted pairs cable to a left-hand lay. Nylon ripcord for ease of jacket stripping

INSULATION

Polyethylene; .036 in O.D.

JACKET

0.014" nominal wall blue or white plenum-rated flame-retardant polyvinyl chloride (PVC)

INDUSTRY STANDARDS / CERTIFICATIONS

UL Listed Type CMR
ETL Verified to TIA-568-B.2 Category 5e
C (UL) CMR
NEC Article 800
UL 1666 Riser Flame Test
RoHS Compliant

SURFACE PRINT

Sample: COMTRAN CORP. (01-12345) 24 AWG CMR C(UL)US
ETL VERIFIED TO TIA 568-B.2 CAT-5e (MM/YY) RoHS 000002 FT

©2010, Cerrowire LLC
All Rights Reserved



MADE IN USA

cerrowire

Electrical Division 800.523.3869 | FAX 877.877.9563
Consumer Markets Division 866.572.3776 | FAX 812.793.2626
www.cerrowire.com

Cat-5e Riser

24 AWG 4 Pair Communications Cable

CERRO FINISHED GOODS PART #	DESCRIPTION	PUT-UP	PACKAGE TYPE	SPOOLS/COILS PER MASTER CARTON	SHIPPING WEIGHT PER MASTER CARTON	UPC CODE
270-0104C	24G 4P Cat-5e Riser CMR Gray 100' Pre-Cut	100	Shrink Film	8	13.6000	048243994113
270-0104J4	24G 4P Cat-5e Riser CMR Gray 500'	500	Box	1	8.5000	048243994120
270-0104K5	24G 4P Cat-5e Riser CMR Gray 1000'	1000	Box	1	17.0000	048243994137
270-0144K5	24-4 Pair Cat-5e Riser CMR Blue 1000'	1000	Box	1	17.0000	048243994144

Electrical Performance

FREQ (MHz)	PSACR (min)	ACR (min)	ATTENUATION (max)	PSNEXT (min)	NEXT (min)	PSELFEXT (min)	ELFEXT (min)	RETURN LOSS (min)
1	60.3	63.3	2.0	62.3	65.8	60.8	63.8	20.0
4	49.2	52.2	4.1	53.3	56.3	48.8	51.8	23.0
10	10.8	43.8	6.5	47.3	50.3	40.8	43.8	25.0
16	36.0	39.0	8.2	44.2	47.2	36.7	39.7	25.0
20	33.5	36.5	9.3	42.8	45.8	34.8	37.8	25.0
25	30.9	33.9	10.4	41.3	44.3	32.8	35.8	24.3
31.25	28.2	31.2	11.7	39.9	42.9	30.9	33.9	23.6
62.5	18.4	21.4	17.0	35.4	38.4	24.9	27.9	21.5
100	10.3	13.3	22.0	32.3	35.3	20.8	23.8	20.1
155	1.4	4.4	28.1	29.4	32.4	17.0	20.0	-
200	-	-	32.4	27.8	30.8	14.8	17.8	-
250	-	-	36.9	26.3	29.3	12.8	15.8	-
300	-	-	41.0	25.1	28.1	11.3	14.3	-
350	-	-	44.9	24.1	27.1	9.9	12.9	-

Values are expressed in dB per 100m (328ft.) length. Values above 100 MHz are for engineering information only.