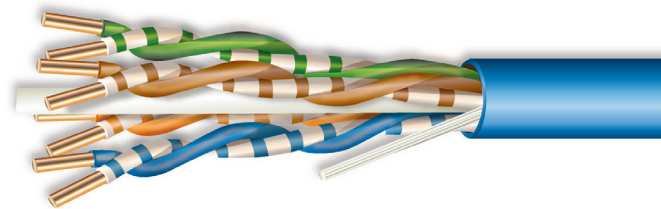


Cat 6 Riser 23 AWG 4 Pair Communications Cable



**23 AWG Solid
Bare Copper**

**Polyethylene
Insulated**

**2' Sequential
Footage Markers**

-10 °C to +75 °C

**Blue or White
PVC Jacketed**

UL® 444, 1666

©2010, Cerro Wire LLC
All Rights Reserved



MADE IN THE USA

APPLICATIONS

UL® Listed Type CMR Communications riser cable. 100', 500' and 1000' lengths in EZ-Pack Box or coils.

CONDUCTORS

Two solid bare copper conductors twisted together with a varying left-hand lay (LHL).

ASSEMBLY

Four twisted pairs cabled to a left-hand lay. Ripcord runs parallel under jacket.

INSULATION

Polyethylene; .040 in. OD

JACKET

0.017" nominal-wall blue or white polyvinyl chloride (PVC); .220 in. OD
Flame retardant

INDUSTRY STANDARDS/CERTIFICATIONS

UL® 444, Communications Cables
UL 1666 Riser Flame Test
NEC Article 800
EU RoHS Directive
UL Listed Type CMR
C (UL) CMR
ETL Verified to TIA-568-B.2-1 Category 6
California State Fire Marshal Approved

SURFACE PRINT

Sample: COMTRAN CORP. (01-12345) 23 AWG CMR C(UL)US ETL
VERIFIED TO TIA 568-B.2-1 CATEGORY 6 (MM/YY) RoHS 000002 FT

cerrowire

Electrical Division: 800.523.3869 | FAX 877.877.9563
Consumer Markets Division: 866.572.3776 | FAX 812.793.2626
www.cerrowire.com

A Marmon Wire & Cable/
Berkshire Hathaway Company

Cat 6 Riser 23 AWG 4 Pair Communications Cable

CERRO FINISHED GOODS PART #	DESCRIPTION	PUT-UP	PACKAGE TYPE	SPOOLS/COILS PER MASTER CARTON	SHIPPING WEIGHT PER MASTER CARTON	UPC CODE
2704-0144K5	23G 4P CAT6 CMR RISER BLU 500FT	500	Box	N/A	21.8	048243994199
2704-0144C	23G 4P CAT6 CMR RISER WHI 1000FT	1000	Box	N/A	12.0	048243994175
2704-0144J4	23G 4P CAT6 CMR RISER BLU 100FT	1000	Shrink Film	4	12.4	048243995554
2704-0124K5	23G 4P CAT6 CMR RISER BLU 1000FT	1000	Box	N/A	21.8	048243994205

Electrical Performance

FREQUENCY MHz	CHAR. IMPEDANCE (Ohms) (+/- 15)	RETURN LOSS (dB) (Min)	ATTENUATION (dB/100 m) (Max)	NEXT (dB/100 m) (Min)	PSNEXT (dB/100 m) (Min)	ACRF (dB/100 m) (Min)	PSACRF (dB/100 m) (Min)
1	100	20	2	74.3	72.3	67.8	64.8
4	100	23	3.8	65.3	63.3	55.7	52.7
8	100	24.5	5.3	60.8	58.8	49.7	46.7
10	100	25	6	59.3	57.3	47.8	44.8
16	100	25	7.6	56.3	54.3	43.7	40.7
20	100	25	8.5	54.8	52.8	41.7	38.7
25	100	24.3	9.5	53.3	51.3	39.8	36.8
31.25	100	23.6	10.7	51.9	49.9	37.9	34.9
62.5	100	21.5	15.4	47.4	45.4	31.8	28.8
100	100	20.1	19.8	44.3	42.3	27.8	24.8
125	100	19.4	22.4	42.9	40.9	25.8	22.8
155.52	100	18.8	25.2	41.4	39.4	23.9	20.9
175	100	18.4	26.9	40.7	38.7	22.9	19.9
200	100	18	29	39.8	37.8	21.7	18.7
250	100	17.3	32.8	38.3	36.3	19.8	16.8
ACR (min) @ 100 MHz = 24.1 dB/100 m				Mutual Cap. = 14pF/ft.		DC Res. = 7.1 W/100	
ACR (min) @ 200 MHz = 10.0 dB/100 m				Operating Temperature: -10°C to 75°C			
Nominal Velocity of Propagation (NVP) = 72%				Propagation Delay Skew: 45 ns/100 m (max)			