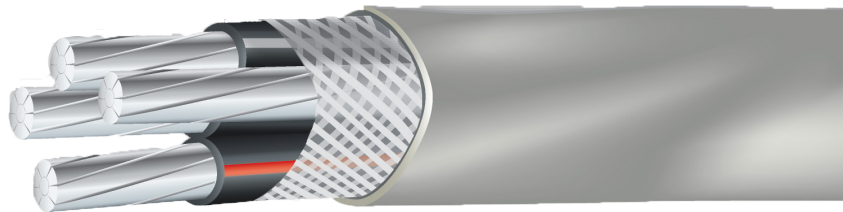


Aluminum SER



Type SE, Style SER
Service Entrance
XHHW-2 Insulated

**XLP Aluminum
Conductors**

600 Volts

**Easy Polarity
Identification**

APPLICATIONS

May be used as service-entrance conductors and in other applications where SE cables are permitted when installed as specified by NEC® Article 230. May be used in dry, above-ground applications only at temperatures up to 90°C.

INSULATED PHASE CONDUCTORS AND NEUTRAL

Compact stranded AA-8000 Series aluminum alloy
Type XHHW-2 conductors
Black XLP (cross-linked polyethylene), rated to 90°C in wet or dry locations
One phase conductor has a red stripe on its insulation surface for easy polarity identification

BARE EQUIPMENT GROUNDING CONDUCTOR

Compact stranded AA-8000 Series aluminum alloy

ASSEMBLY

Insulated and bare conductors are twisted together.
A glass-reinforced tape is applied over the conductors.

JACKET

Gray, sunlight-resistant PVC (polyvinyl chloride) jacket over the complete assembly

INDUSTRY STANDARDS

UL® 44 (insulated conductors)
UL® 854 Service Entrance Cables
Federal Specification A-A-59544
NFPA70: National Electrical Code®
RoHS Compliant

SURFACE PRINT

Sample: AA-8000 AL TYPE SE CABLE STYLE R XHHW-2
600V 3 CDRS. 2 AWG 1 CDR. 4 AWG (UL)

©2010, Cerro Wire LLC
All Rights Reserved



MADE IN THE USA

cerro
Electrical®

866.572.3776 | FAX 812.793.2626
www.cerroretail.com

Marmon Retail Home
Improvement Products, Inc.

Aluminum SER

Type SE, Style SER

Service Entrance XHHW-2 Insulated

PRODUCT CODE NUMBER	CONDUCTORS	BARE EQUIPMENT GROUND AWG	APPROX. O.D. INCHES	ALLOWABLE AMPACITIES*			APPROX. NET WT. LBS./M FT.	UPC CODE
	AWG SIZE			75°C ****	90°C ****	DWELLING *****		
536-3600J	6-6-6-6	6	0.650	40	50	55	182	662927584553
536-4800J	2-2-2-4	4	0.863	75	90	100	346	662927584706
536-5200J	1-1-1-3	3	0.986	100	115	110	449	662927584751
536-5600J	1/0-1/0-1/0-2	2	1.061	100	120	135	526	662927584805
536-6000J	2/0-2/0-2/0-1	1	1.164	115	135	150	637	662927584850
536-6800T	4/0-4/0-4/0-2/0	2/0	1.390	150	180	205	948	662927584973
536-6800J	4/0-4/0-4/0-2/0	2/0	1.390	150	180	205	948	662927584959

* Per Table 310-16 NEC®

** For termination to equipment for circuits rated 100 amperes or less or marked for Nos. 6 through 1 conductors.

*** For termination to equipment for circuits rated over 100 amperes or marked for conductors larger than No. 1.

**** Dry locations.

***** For dwelling units, conductors shall be permitted at listed ampacities for 120/240 volt, 3 wire, single-phase service conductors that supply the total load.

PACKAGE CODE	T	J
AWG SIZE	250 FT REEL	500 FT REEL
6-6-6-6		X
2-2-2-4		X
1-1-1-3		X
1/0-1/0-1/0-2		X
2/0-2/0-2/0-1		X
4/0-4/0-4/0-2/0	X	X