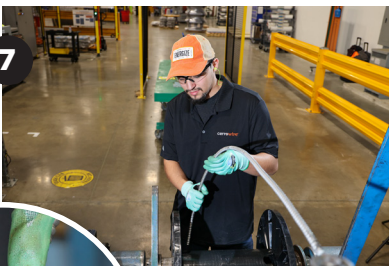


# User Guide

## MC Cable Master Reel

LABOR SAVING • SEQUENTIAL FOOTAGE

- 1 - The MC Cable Master Reel arrives on a cradle pallet, making it easy to move into position with a forklift.
- 2 - Deliver the MC Cable Master Reel to the payoff equipment.
- 3 - Wearing safety glasses and gloves, load the MC Cable Master Reel.
- 4 - Remove the packaging wrap.
- 5 - Cerrowire MC Cable Master Reels payoff it the easiest direction for pulling.
- 6 - Insert the MC Cable through the counter.
- 7 - Insert the MC Cable tip into a reel.
- 8 - Run the take up reel for the desired length.
- 9 - Or, use a PreFab cutting table for the take up.



### MC Cable Master Reel Specs

AWG/Conductors	Ft	Net Lbs.
12/2 Solid	10000	1034
12/2 Stranded	10000	1055
12/3 Solid	10000	1357
12/3 Stranded	10000	1396

**Colored chevrons** printed on the armor show the conductor colors inside and point in the easiest direction to pull. There's also a black line every two feet, making it **easy to cut exact lengths** without using a tape measure.



For more information scan the QR code to learn more.



by cerrowire®

Electrical Distribution 800.523.3869

©2026 Cerrowire Rev 03/2026  
A Marmon/Berkshire Hathaway Company